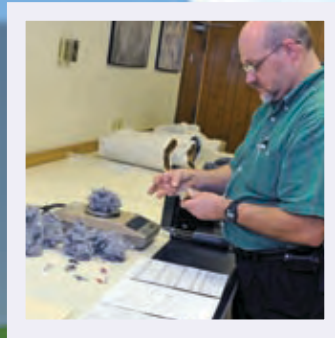
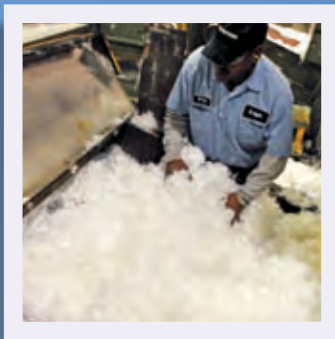


# New life for old fibers



**Leigh**

*Recycling Solutions  
for Generations*

# Going Green — it's a win/win

There are many good reasons to go green, and even more ways to do so. At Leigh Fibers, we divert fiber and textile waste from landfills and convert it into quality materials that meet your specific needs. These reprocessed materials are as business-friendly as they are earth-friendly, giving you opportunities to cut costs and marketing advantages that resonate with today's consumers.

Leigh is a global leader in reprocessing, custom-blending fiber-based materials for everything from mattress pads to automotive components. Our customers count on us to meet their most challenging requirements, and to deliver the volumes they need, when they need them.

Leigh's facilities in South Carolina, Montreal and California probably recycle more fiber than anyone in North America. We also have the industry's only ISO-9001:2008 certification, with unsurpassed experience, capacity, quality systems, and customer service. And our operations are as earth-friendly as our products, continuously reducing our own waste and energy consumption.

Leigh is a proven partner for companies in diverse industries and more than 25 countries around the world. If you need a good source of reprocessed materials, or someone to manage the waste you generate, we can help.



**Leigh can reprocess and trade 350 million pounds of fibers annually.**



# A product range to handle virtually any application

Leading companies all over the world count on Leigh Fibers to provide them with top-quality fibers and other materials that meet their often-unique needs. Leigh's resourcefulness, capacity and customer focus make us your best choice for:

- natural fibers (e.g., cotton, wool, jute)
- synthetic/artificial fibers (e.g. nylon, acrylic, polyester)
- technical fibers (e.g., SafeLeigh™ fire-retardant aramids)
- textile by-products (e.g., tow waste, non-wovens, yarns)
- recycled carpet
- shoddy
- plastics (e.g., PP, PE, PET, Nylon 6)



The average consumer disposes of over 30 lbs. of textiles per year.

# Meeting the unique needs of diverse markets

Leigh supplies a variety of high-quality, environmentally-friendly materials that meet manufacturers' specific needs in a wide range of markets, including:

- Automotive
- Mattresses
- Caskets
- Filtration
- Erosion Control
- Furniture
- Construction
- Composite Lumber
- Currency and Paper



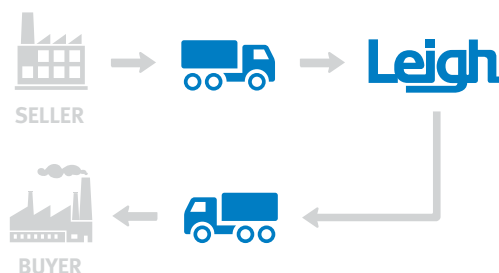


# Solutions that benefit manufacturers, the public and the planet we share

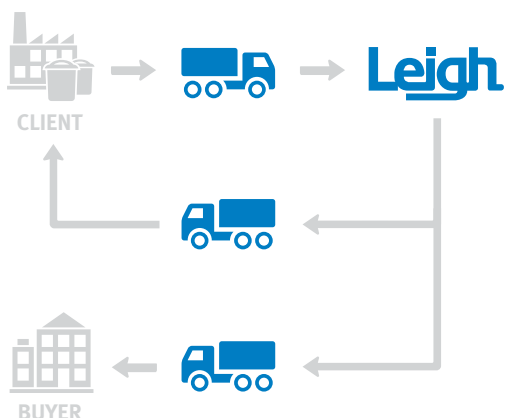
**Tollwork** – Why pay to have waste hauled to a landfill, or for special machinery to reprocess it yourself? Leigh can blend virtually any textile-type products, and has plenty of capacity.



**Materials for Reuse** – We are experts at keeping post-industrial manufacturing waste out of landfills, converting it into usable fiber, shoddy or agglomerated plastic to meet common or special needs.



**Salvage Buyers** – Leigh salvages fibers damaged by fire, water or chemicals and turns them into useful materials for trading or processing.



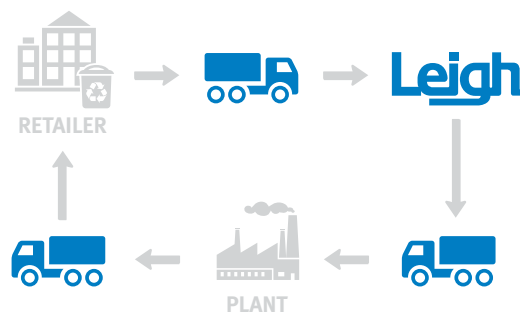
**Trading** – If you have fiber or raw material to sell, Leigh can save you time. We can probably find a buyer, and also negotiate a fair price and coordinate shipping.



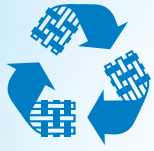
**Product Destruction** – Our reprocessing services help protect valuable trademarks and the public safety by destroying seized goods and counterfeit uniforms (police, fire, military, etc.).



**Closed Loop Manufacturing** – Leigh reprocesses customers' post-industrial waste and post-consumer products into materials they can use to produce other products. It's a closed loop – with your competitors on the outside.



Leigh imports and exports materials to over 25 countries throughout the world.



# Leigh at a glance

- over 90 years of global experience
- largest fiber recycler in North America with nearly 1.2 million square feet
- ISO-9001:2008 certified (unique in the industry)
- state-of-the-art facilities in South Carolina and Montreal



**Over the years, Leigh has diverted  
14 billion pounds of fiber from landfills**



**Leigh**

*Recycling Solutions for Generations*

**Leigh Fibers, Inc.**

1101 Syphrit Road, Wellford, SC 29385

**Tel:** (864) 439-4111 — **Fax:** (864) 439-4116

**e-mail:** [marketing@leighfibers.com](mailto:marketing@leighfibers.com) — [www.leighfibers.com](http://www.leighfibers.com)